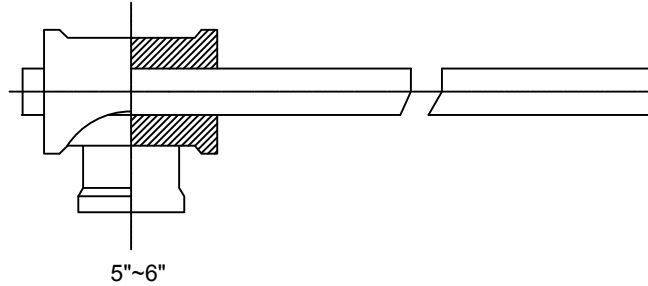
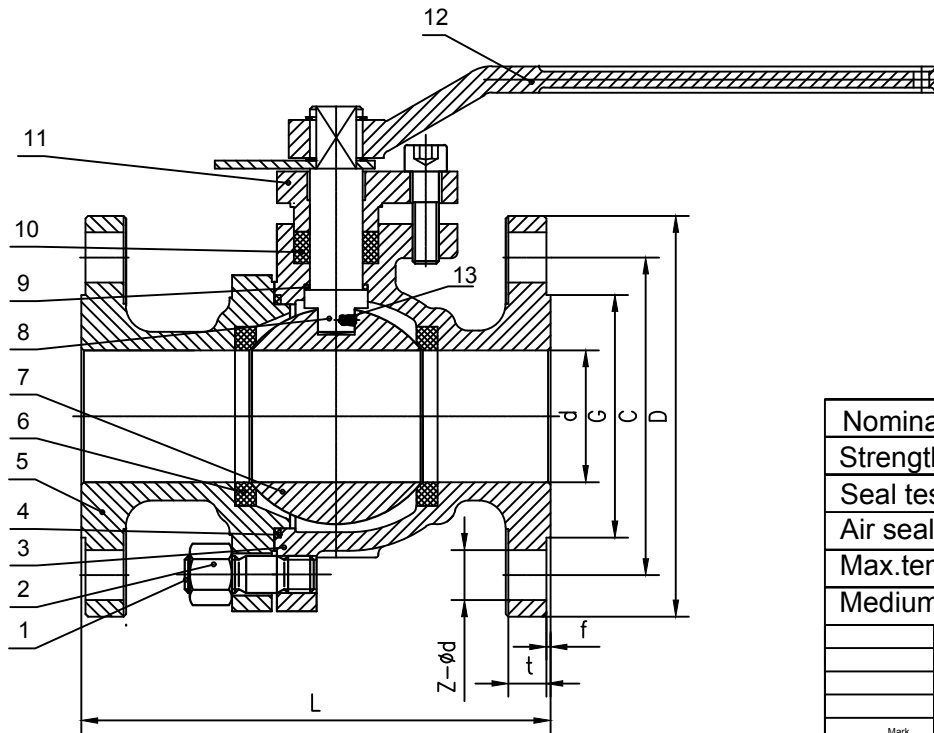


150LB RF

NPS	L	d	D	C	G	t	f	n-Ød
2"	178	49	150	120.7	92.1	14.3	2	4-Ø19
2-1/2"	190	65	180	139.7	104.8	15.9	2	4-Ø19
3"	203	80	190	152.4	127	17.5	2	4-Ø19
4"	229	100	230	190.5	157.2	22.3	2	8-Ø19
5"	356	125	255	216	185	22.3	2	8-Ø22
6"	394	150	280	241.3	216	23.9	2	8-Ø22



Technical Specification	
API 608	Design & manufacture standard
ASME B16.10	Face to face standard
ASME B16.5	Flange end dimension standard
API 598	Inspection & test standard



13	SPRING	SS304
12	HANDLE	CS+Zn
11	GLAND FLANGE	A351 CF3M
10	PACKING	PTFE
9	WASHER	PTFE
8	STEM	A182 F316
7	BALL	A182 F316
6	SEAT RING	RPTFE
5	BONNET	A351 CF3M
4	GASKET	PTFE
3	BODY	A351 CF3M
2	NUT	A194 8
1	BOLT	A193 B8
No.	PART NAME	MATERIAL

Nominal pressure	150LB	MPa
Strength test pressure	3.0	
Seal test pressure	2.2	
Air seal pressure	0.6	
Max. temperature	-29- 120°C	
Medium	Water.air.steam.gasetc	

BALL VALVE

Construction

150LB RF

Mark	Number	Change File	Date	Pattern marker	Wight	Proportion
Design		Standardizator		S	A	1:1
Collate		Authorize		Page	1	
Approval		Drawing	JACK			
Technology		Date	2020.06.15			