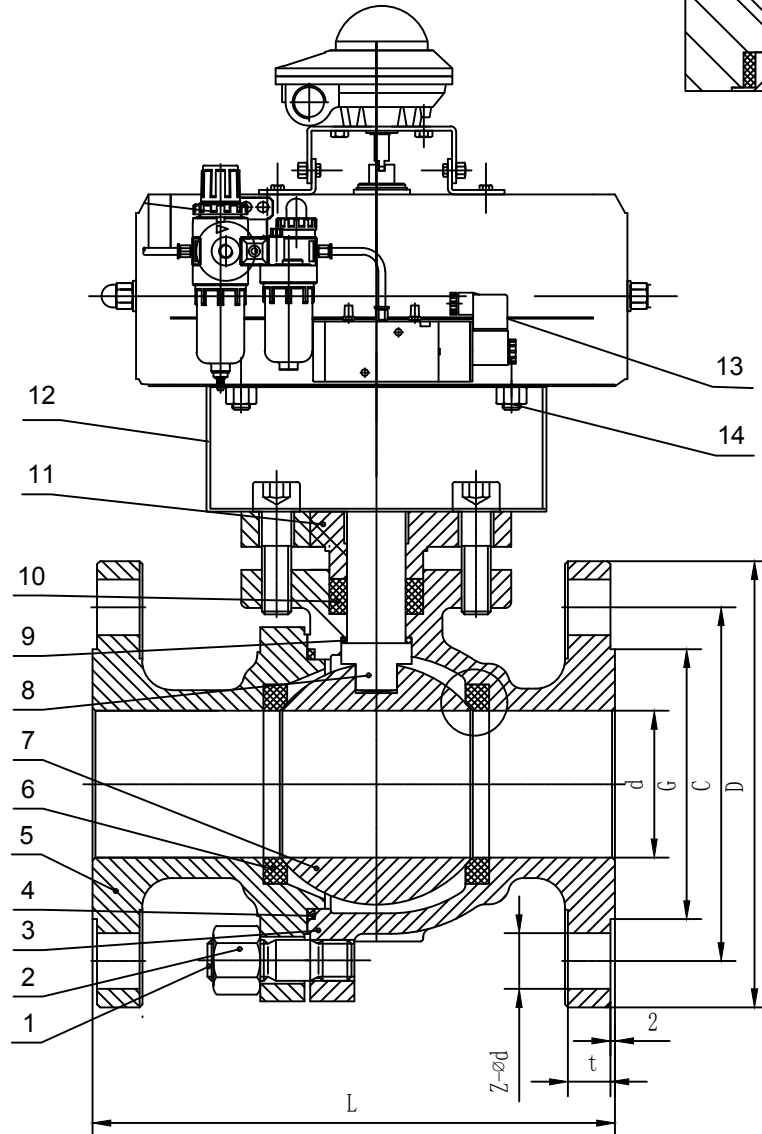
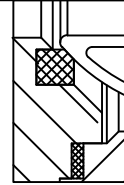


150LB RF

DN	L	d	D	C	G	t	n-Ød
3"	203	80	190	152.4	127	17.5	4-Ø19

Fire Safe Design



Technical Specification	
API 6D	Design & manufacture standard
ASME B16.10	Face to face standard
ASME B16.5	Flange end dimension standard
API 6FA	Fire safety standard
API 598	Inspection & test standard

15	Pneumatic actuator	
14	NUT	A194 2HM
13	BOLT	A193 B7M
12	YOKE	CS
11	GLAND FLANGE	B148 C95800
10	PACKING	PTFE
9	O-RING	PTFE
8	STEM	MONEL K500
7	BALL	B148 C95800
6	SEAT RING	PTFE
5	BONNET	B148 C95800
4	GASKET	PTFE
3	BODY	A216 WCB
2	NUT	A194 2HM
1	BOLT	A193 B7M
No.	PART NAME	MATERIAL

Nominal Pressure	150LB	MPa
Strength test pressure	3.0	
Seal test pressure	2.2	
Air seal pressure	0.6	
Max.temperature	-29-120°C	
Medium	Water.air.steam.gas etc	

BALL VALVE

Construction

150LB RF