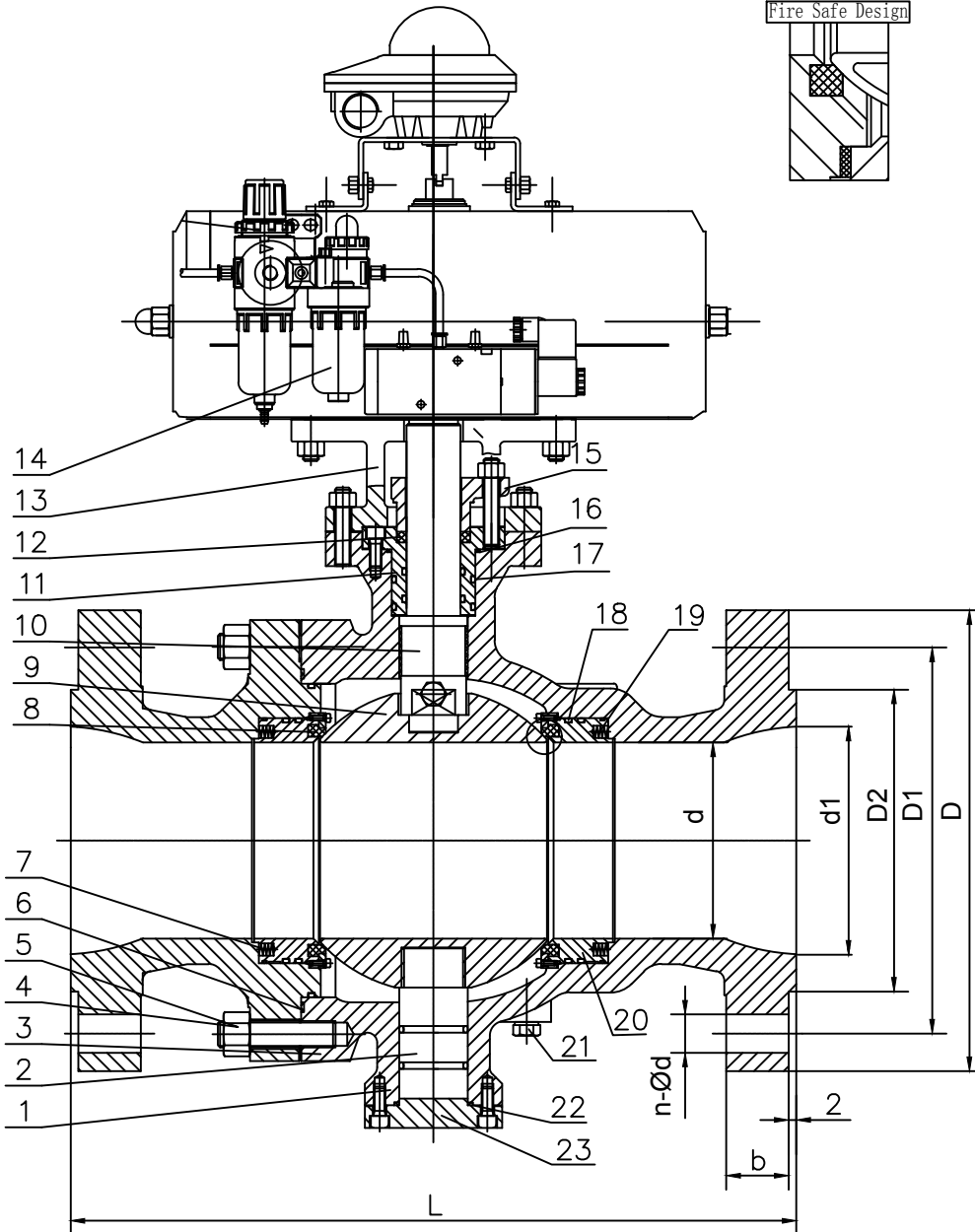
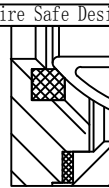


150LB RF

NPS	L	d	d1	D	D1	D2	b	n-Ød
6*4"	394	100	150	280	241.5	216	23.9	8-Ø22

Fire Safe Design



Technical Specification	
API 6D	Design & manufacture standard
ASME B16.10	Face to face standard
ASME B16.5	Flange end dimension standard
API 6FA	Fire safety standard
API 598	Inspection & test standard

Nominal pressure	150LB
Strength test pressure	3.0
Seal test pressure	2.2
Air seal pressure	0.6
Max. temperature	-20- 120°C
Medium	Water.oil.gas etc.

12	Packing	Graphite			
11	Gand	B148 C95800	23	Cover	B148 C95800
10	Stuffing Box	B148 C95800	22	Gasket	SS304+Graphite
9	Stem	MONEL K500	21	Vent valve	CS
8	Ball	B148 C95800	20	Seat ring	B148 C95800
7	Seat	PTFE	19	Spring	Inconel X750
6	Gasket	SS304+Graphite	18	O ring	NBR
5	Nut	A194 2HM	17	O ring	NBR
4	Bolt	A193 B7M	16	O ring	NBR
3	Lower Stem	MONEL K500	15	Gland flange	B148 C95800
2	Bonnet	B148 C95800	14	Pneumatic actuator	
1	Body	B148 C95800	13	YOKE	CS
No.	PART NAME	MATERIAL	No.	PART NAME	MATERIAL

2-PC FLANGE
BALL VALVE

Construction

150LB RF

Page

1