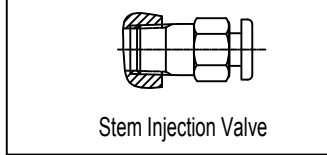
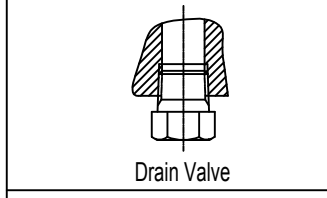
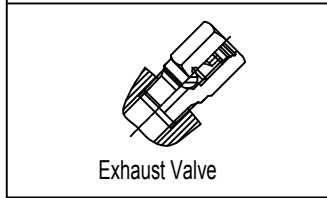
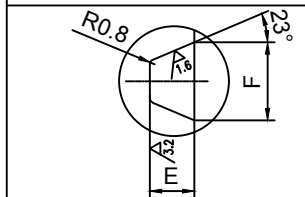
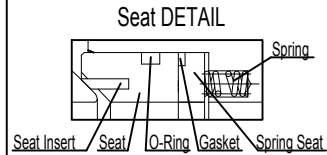


SIZE	CLASS	L	D	O	W	R	P	T	E	F	n-Ød	H
2"	1500	371	51	215	165.1	124	95.25	38.1	7.92	11.91	8-Ø25.5	177
4"	1500	549	102	310	241.3	194	161.93	54	7.92	11.91	8-Ø35	250

GENERAL NOTES
 DESIGN:API 608
 FLANGE DIMENSIONS:ASME B16.5
 FACE TO FACE:ASME B16.10
 PRESSURE/TEMPERATURE:ASME B16.34
 FIRE SAFETY:API 607
 TEST:API 598



36	Gear	FITTINGS
35	Bolt	A193 B7
34	Key	A29 1045
33	Pin	A29 1045
32	Injection Valve	A105
31	Plate	A105
30	Gasket	Graphite
29	Bolt	A193 B7
28	O-Ring	VITON
27	Stem	17-4PH
26	Gasket	PTFE
25	Gasket	Graphite+316
24	O-Ring	VITON
23	Gland	A105N+ENP
22	Bearing	CS+PTFE
21	Seat	A182 F316
20	Spring	Inconel X750
19	Seat Insert	PEEK
18	Exhaust Valve	A105
17	Spring Seat	A105N+ENP
16	Gasket	Graphite
15	O-Ring	VITON
14	Nut	A194 2H
13	Bolt	A193 B7
12	Gasket	Graphite+316
11	O-Ring	VITON
10	Ball	A182 F316L
9	Bearing	CS+PTFE
8	Spring	A276 316
7	Drain Valve	A105
6	Trunnion	17-4PH
5	O-Ring	VITON
4	Gasket	Graphite+316
3	Bolt	A193 B7
2	Body	A105
1	End Body	A105
NO.	NAME	MATERIAL

USER:

ITEM:

DRAWING: DG

AUDITING: YWL

APPROVE:

J-VALVES

NAME: Trunnion Ball VALVE

DATE	FRIGURE NO.	VER. NO.
2015-03-18	Q20150318-01	01