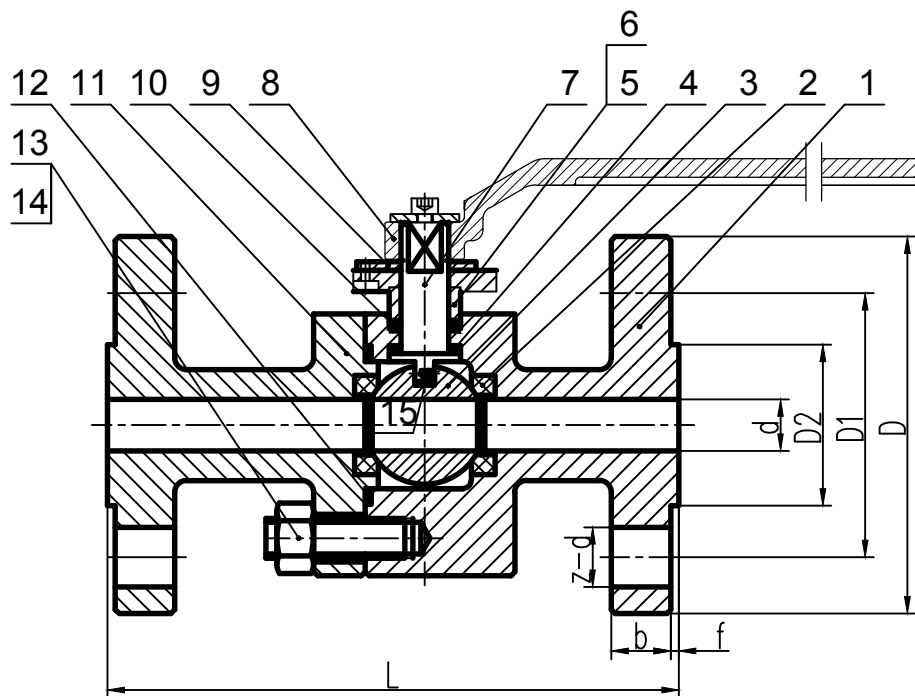


150LB RF

NPS	L	d	D	D1	D2	b	f	n-Ød
1/2"	108	15	90	60.3	35	8	2	4-Ø16
3/4"	117	18	100	69.9	43	8.6	2	4-Ø16
1"	127	25	110	79.4	51	9.6	2	4-Ø16
1-1/4"	140	32	115	88.9	64	11.2	2	4-Ø16
1-1/2"	165	38	125	98.4	73	12.7	2	4-Ø16

Technical Specification	
ISO 17292	Design & manufacture standard
ASME B16.10	Face to face standard
ASME B16.5	Flange end dimension standard
ISO 5208	Inspection & test standard



14	SPRING	SS304
13	BOLT	A193 B8
12	GASKET	Graphite+SS316
11	BONNET	A182 F316
10	PACKING	Graphite
9	PLATE	SS
8	LEVER	CS+Zn
7	STEM	A182 F316
6	GLAND FLANGE	SS316
5	GLAND	SS316
4	WASHER	PTFE
3	BALL	A182 F316
2	SEAT	RPTFE
1	BODY	A182 F316
NO	PART NAME	MATERIAL

Nominal pressure	150LB
Strength test pressure	3.0 MPa
Seal test pressure	2.2 MPa
Air seal pressure	0.6 MPa
Max.temperature	-29- 120°C
Medium	Water.air.steam.gasetc

				FLOATING BALL VALVE			Construction
Mark	Number	Change File	Date	Pattern marker	Wight	Proportion	
Design		Standardization		S	A	1:1	
Collate		Authorize		Page		1	
Approval		Drawing	JACK	150LB RF			
Technology		Date	2020.06.15				